

D. C. #1 6 JUNE 1956

BORING LOGS

D. C. #2 7 JUNE 1956

DEPTH (FEET)	LOG #1	LOG #2
0.0	25 ML 1	25 ML 1
0.5	25 ML 1	25 ML 1
1.0	25 ML 1	25 ML 1
1.5	25 ML 1	25 ML 1
2.0	25 ML 1	25 ML 1
2.5	25 ML 1	25 ML 1
3.0	25 ML 1	25 ML 1
3.5	25 ML 1	25 ML 1
4.0	25 ML 1	25 ML 1
4.5	25 ML 1	25 ML 1
5.0	25 ML 1	25 ML 1
5.5	25 ML 1	25 ML 1
6.0	25 ML 1	25 ML 1
6.5	25 ML 1	25 ML 1
7.0	25 ML 1	25 ML 1
7.5	25 ML 1	25 ML 1
8.0	25 ML 1	25 ML 1
8.5	25 ML 1	25 ML 1
9.0	25 ML 1	25 ML 1
9.5	25 ML 1	25 ML 1
10.0	25 ML 1	25 ML 1
10.5	25 ML 1	25 ML 1
11.0	25 ML 1	25 ML 1
11.5	25 ML 1	25 ML 1
12.0	25 ML 1	25 ML 1
12.5	25 ML 1	25 ML 1
13.0	25 ML 1	25 ML 1
13.5	25 ML 1	25 ML 1
14.0	25 ML 1	25 ML 1
14.5	25 ML 1	25 ML 1
15.0	25 ML 1	25 ML 1
15.5	25 ML 1	25 ML 1
16.0	25 ML 1	25 ML 1
16.5	25 ML 1	25 ML 1
17.0	25 ML 1	25 ML 1
17.5	25 ML 1	25 ML 1
18.0	25 ML 1	25 ML 1
18.5	25 ML 1	25 ML 1
19.0	25 ML 1	25 ML 1
19.5	25 ML 1	25 ML 1
20.0	25 ML 1	25 ML 1
20.5	25 ML 1	25 ML 1
21.0	25 ML 1	25 ML 1
21.5	25 ML 1	25 ML 1
22.0	25 ML 1	25 ML 1
22.5	25 ML 1	25 ML 1
23.0	25 ML 1	25 ML 1
23.5	25 ML 1	25 ML 1
24.0	25 ML 1	25 ML 1
24.5	25 ML 1	25 ML 1
25.0	25 ML 1	25 ML 1
25.5	25 ML 1	25 ML 1
26.0	25 ML 1	25 ML 1
26.5	25 ML 1	25 ML 1
27.0	25 ML 1	25 ML 1
27.5	25 ML 1	25 ML 1
28.0	25 ML 1	25 ML 1
28.5	25 ML 1	25 ML 1
29.0	25 ML 1	25 ML 1
29.5	25 ML 1	25 ML 1
30.0	25 ML 1	25 ML 1

OVERBURDEN SOIL
 STONEY (45' MINIMUM)
 EL. 5025.03
 OVERBURDEN SOIL
 EL. 5014.08

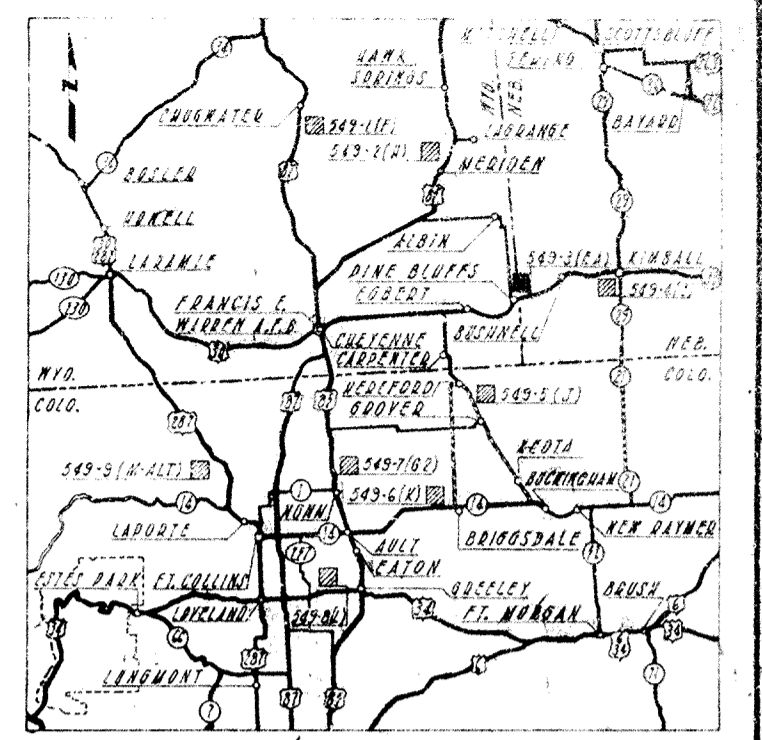
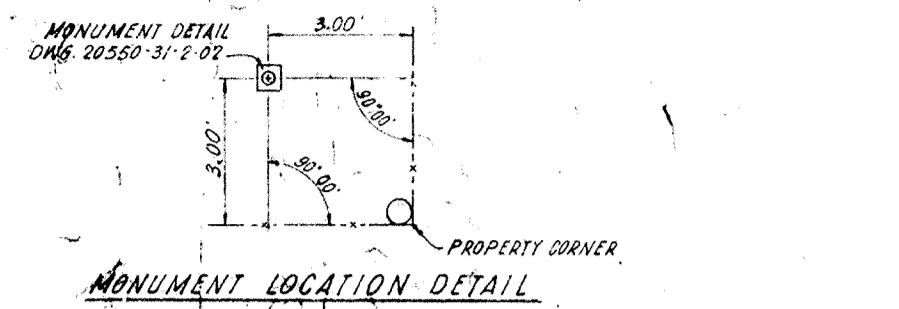
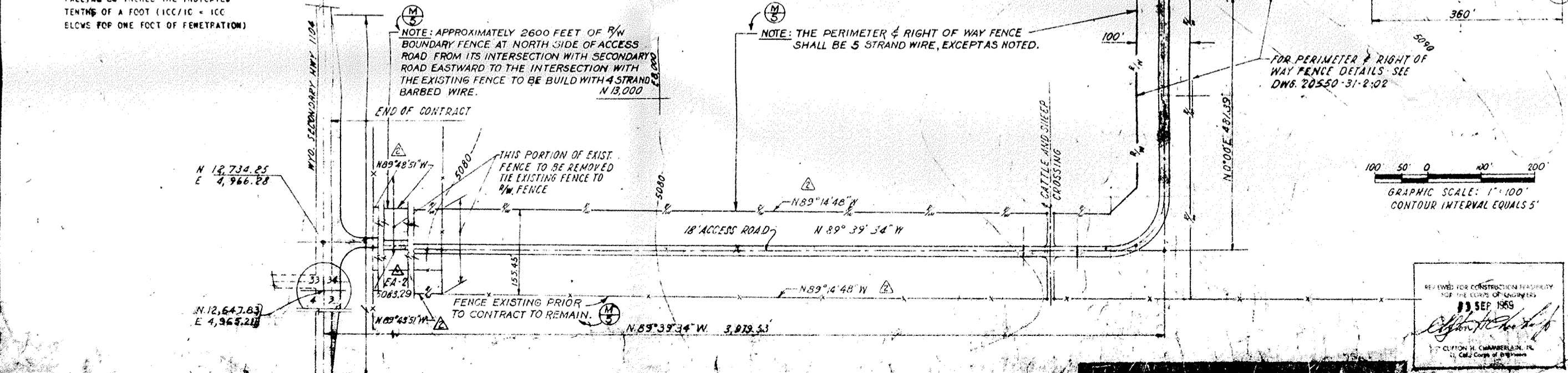
BORING LEGEND

GF - GEOLOGIC FORMATION
 LL - LIQUID LIMIT
 PI - PLASTICITY INDEX
 MH - PERCENT OF MOISTURE
 SK - SKILL CORE
 UDW - UNIT DRY WEIGHT IN LBS./CU. FT.
 SPT - STANDARD PENETRATION TEST:
 NUMBER OF BLOW REQUIRED TO
 DRIVE A 2" O.D. SPLIT TUBE
 SAMPLER WITH A 100 LB. WEIGHT
 FALLING 30 INCHES THE INDICATED
 TENTHS OF A FOOT (100/10 = 100
 BLOW FOR ONE FOOT OF PENETRATION)

NOTES

1. DESCRIPTION AT THE RIGHT OF THE BORING LOG IS SUPPLEMENTAL DATA BASED ON LABORATORY AND FIELD INSPECTION OF THE SAMPLES.
 2. ELEVATIONS SHOWN FOR GROUND SURFACE REFER TO MSL, 1929 ADJUSTMENT.
 3. CLASSIFICATIONS (ML, MH, CF, & SH) BASED ON UNIFIED SOIL CLASSIFICATION SYSTEM (SH 2-1957) U. S. G. I.

4. ABSENCE OF GROUND WATER DATA ON BORING LOGS SHALL NOT BE CONSTRUED AS INDICATING THAT NO WATER WILL BE ENCOUNTERED DURING CONSTRUCTION.



GENERAL NOTES

1. TOPOGRAPHY BY FALCON AIR MAPS CO. OF DENVER, ILLINOIS BY STEREOSCOPIC PHOTOGRAMMETRIC PROCESS FROM AERIAL PHOTOGRAPHS TAKEN IN JANUARY, 1959.
 2. 549 NORTH EQUALS TRUE NORTH
 3. ELEVATIONS REFERRED TO MEAN SEA LEVEL, ARE BASED ON THE U.S. COAST & GEODETIC SURVEY 1929 GENERAL ADJUSTMENT
 4. ALL COORDINATES ARE LOCAL ASSUMED GRID COORDINATES. NO CORRECTIONS FROM SEA LEVEL ARE REQUIRED.

HORIZONTAL CONTROL		HORIZ. & VERTICAL CONTROL	
LINE	BEARING DISTANCE	POINT	ELEVATION LAT. IN. DEP. (C)
EA-3 TO LSWP	N 89° 34' 54" W 1,742.30	EA-3	5094.58 13.319 99 18.486 59
EA-2 TO LSWP	N 89° 34' 54" W 1,742.30	EA-2	5083.49 12.668 52 6.529 53
EA-2 TO EA-3	N 48° 30' 17" E 1,742.30	L.S.W.P.	5,451.98 9.152 74
		L.S.W.P.	3,740.95 9.314 57

LEGEND

--- EXISTING FENCE (TO BE REMOVED INSIDE PERIMETER AREA)
 --- SECURITY FENCE
 --- FEE BOUNDARY & PERIMETER FENCE
 --- RIGHT OF WAY FENCE
 * WP WORK POINTS
 Δ MONUMENT
 --- NOT IN CONTRACT
 ● BORING
 ○ WELL

200.1e
 B08WY065702_01.04_0003_a

REVISION	DATE	DESCRIPTION	BY	CHECKED	SCALE
1	4 June 56	REVISED AS PER OPERATIONAL AS BUILT	S.R.C.P.		
2	13 Nov 59	REVISED TO SHOW AS BUILT CONDITIONS	S.R.C.P.		
3	13 Nov 59	ADDED NOTES FOR PERIMETER & FENCE SECTION	S.R.C.P.		
4	2 NOV 59	REVISED IN ACCORDANCE WITH ADDENDUM NO. 2	S.R.C.P.		
5	2 NOV 59	REVISED IN ACCORDANCE WITH ADDENDUM NO. 1	S.R.C.P.		

Stearns-Roger
 ENGINEERS - ARCHITECTS - MANUFACTURERS

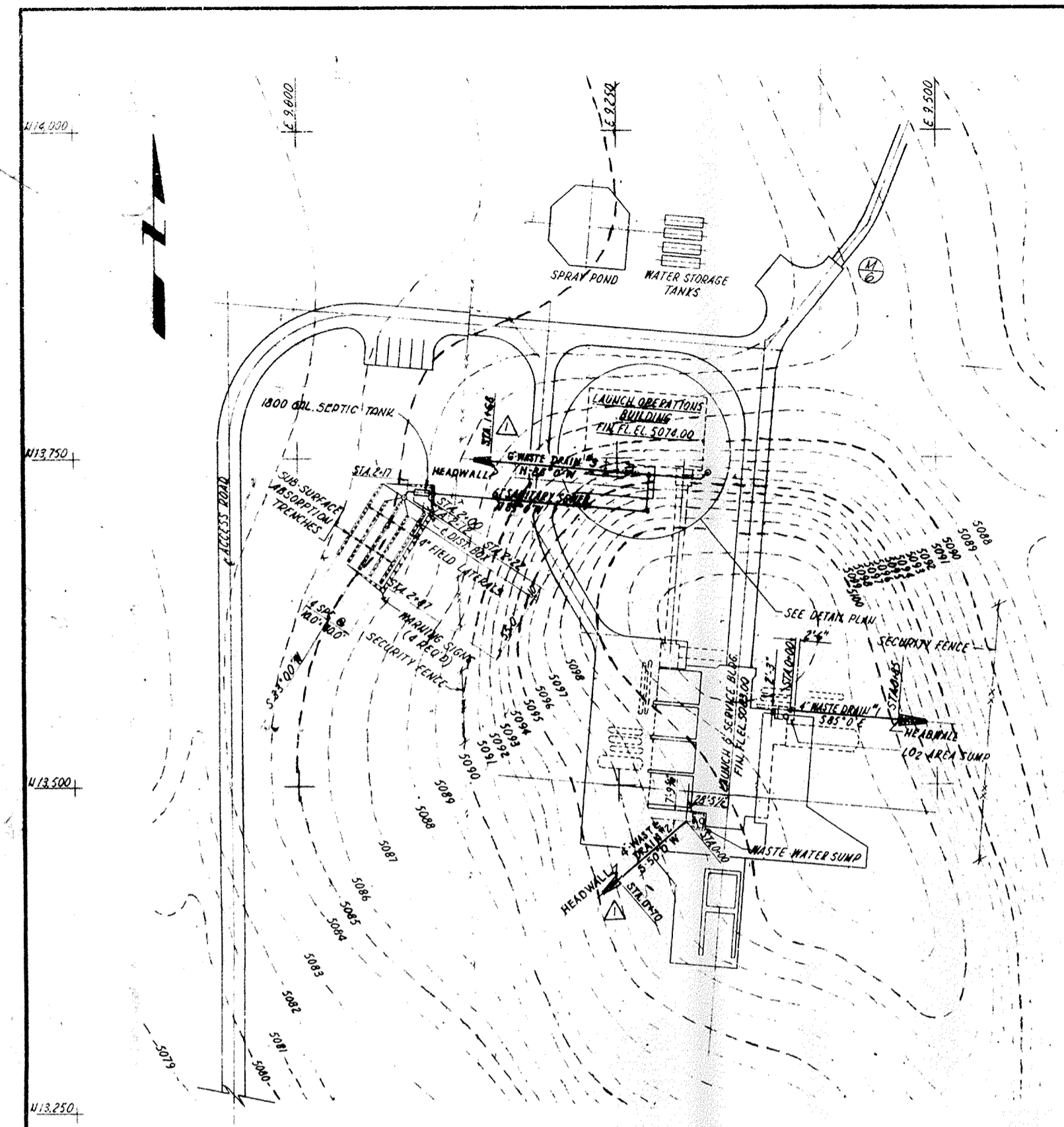
DEPARTMENT OF THE AIR FORCE
 AIR FORCE BALLISTIC MISSILE DIVISION (ARDC)
 HAWAIIAN ISLANDS, CALIFORNIA

WS-107A-1 OPERATIONAL BASE
 FRANCIS E. WARREN A.F.B., WYOMING

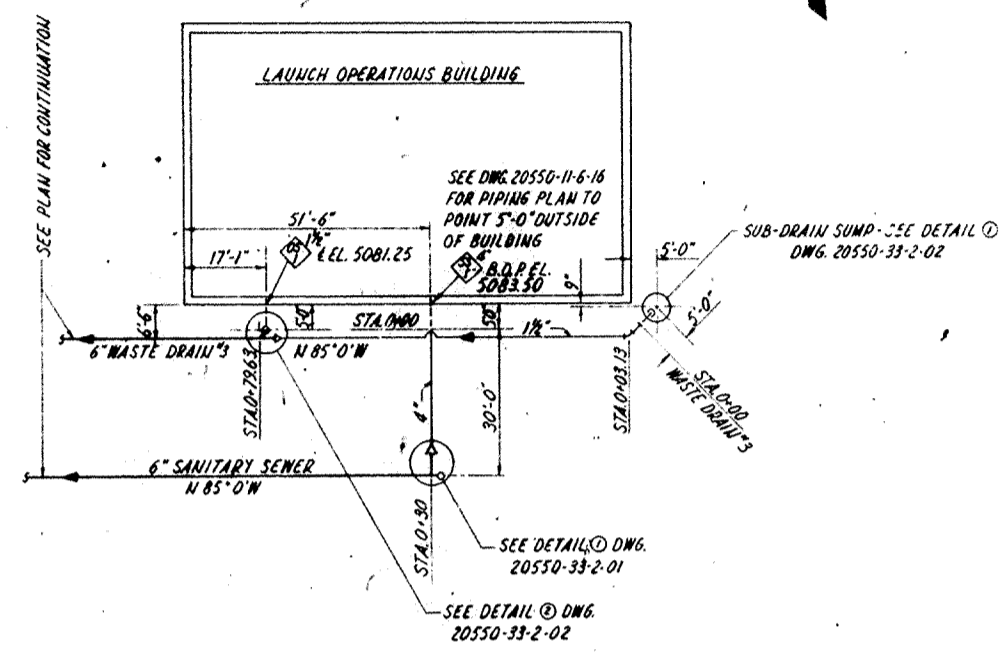
SITE 549-3
SITE PLAN

DATE: SEP 22 1959
 SPECIFICATION NO. ENG. 25-066-69-15
 DATE: 30 JULY 1959
 SCALE: AS NOTED

20563-01-2-D2



PLAN
SANITARY SEWER & WASTE DRAINS
SCALE: 1" = 50'



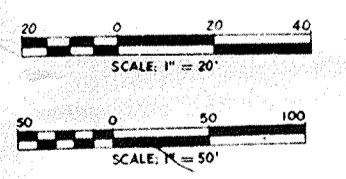
DETAIL PLAN
SCALE: 1" = 20'

GENERAL NOTES

1. THE MINIMUM DEPTH OF COVER FOR SANITARY SEWER (WASTEWATER) LINES SHALL BE 3'-0" AND 2'-0" FOR WASTE WATER LINES.
2. MINIMUM SLOPE FOR SANITARY SEWERS AND WASTE DRAINS SHALL BE 1.00%.
3. SEE DRAINAGE DISTRICT STANDARD DWG. 20-09 OF SHEET "B" FOR SUB-SURFACE ABSORPTION TRENCH DETAILS.
4. FIELD LATERALS SHALL BE WATER-TIGHT OPEN JOINT OR PERFORATED IN DISPOSAL TRENCH.

REFERENCE DRAWINGS

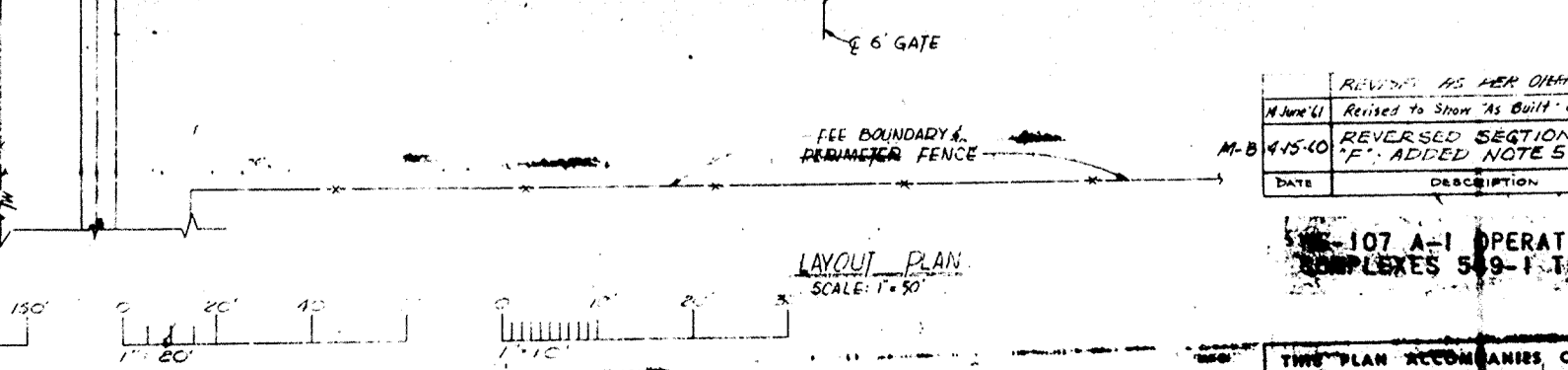
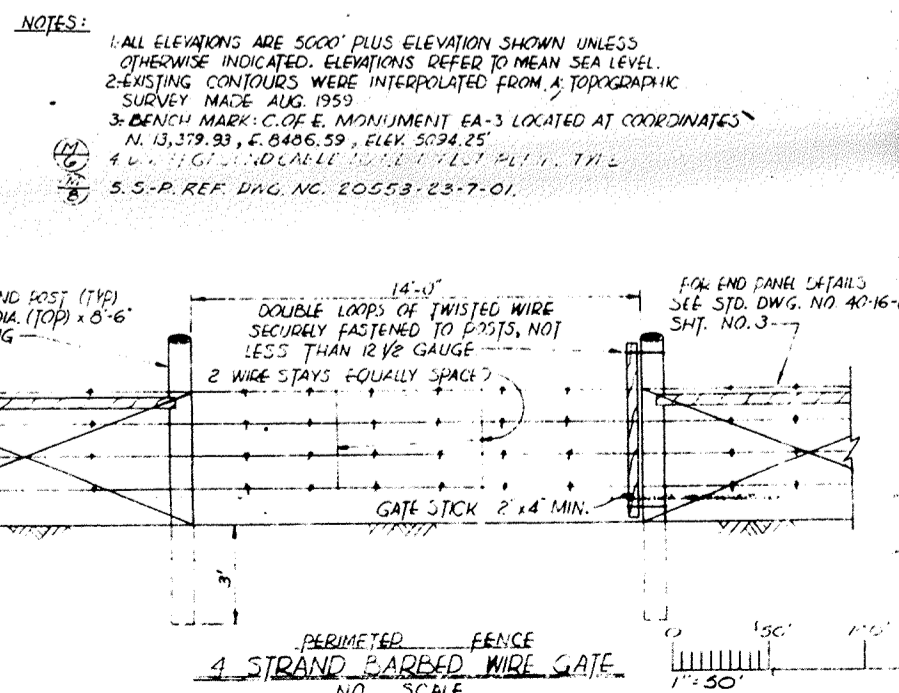
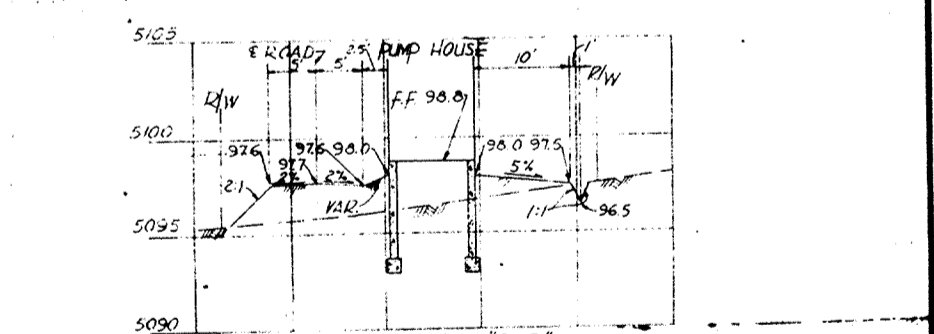
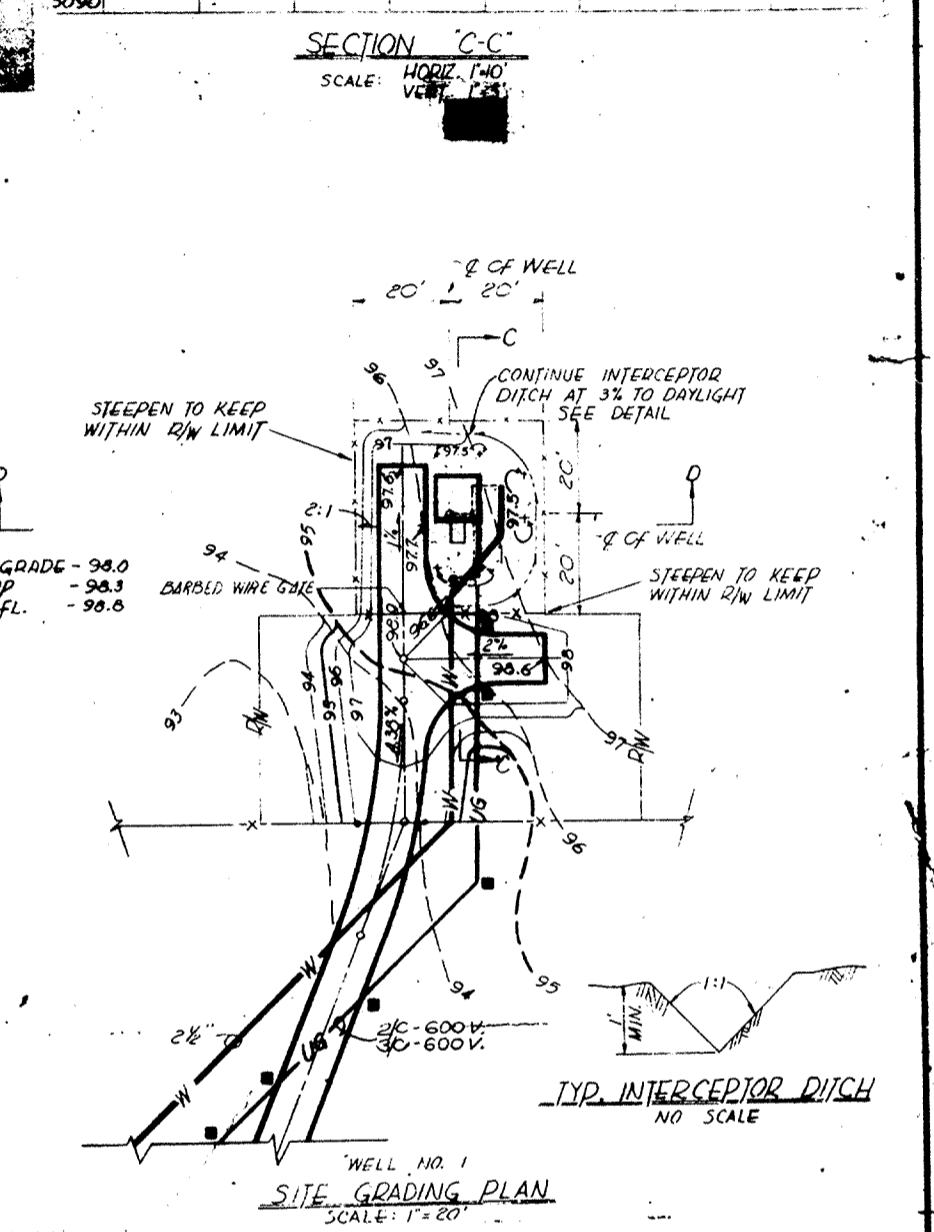
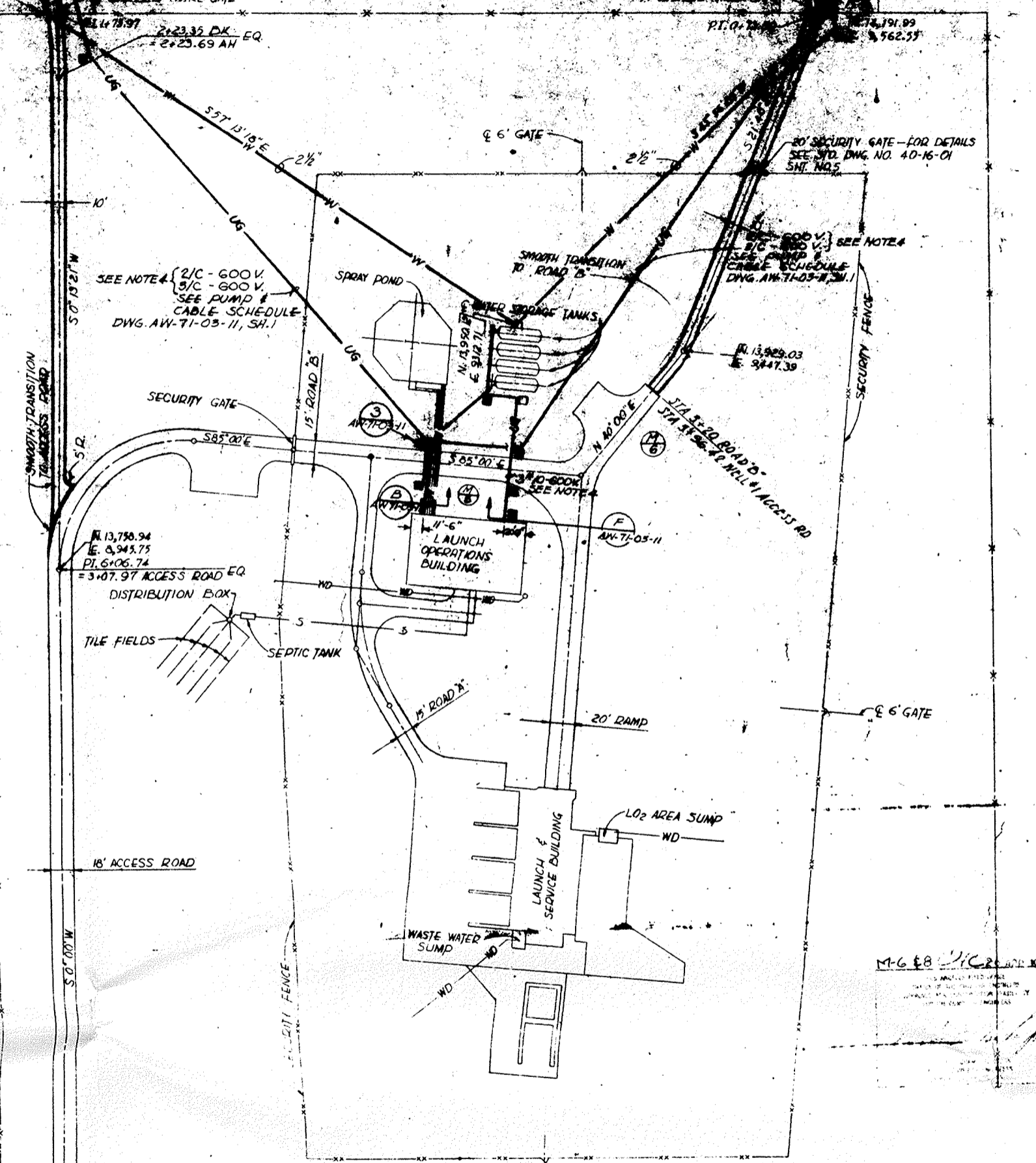
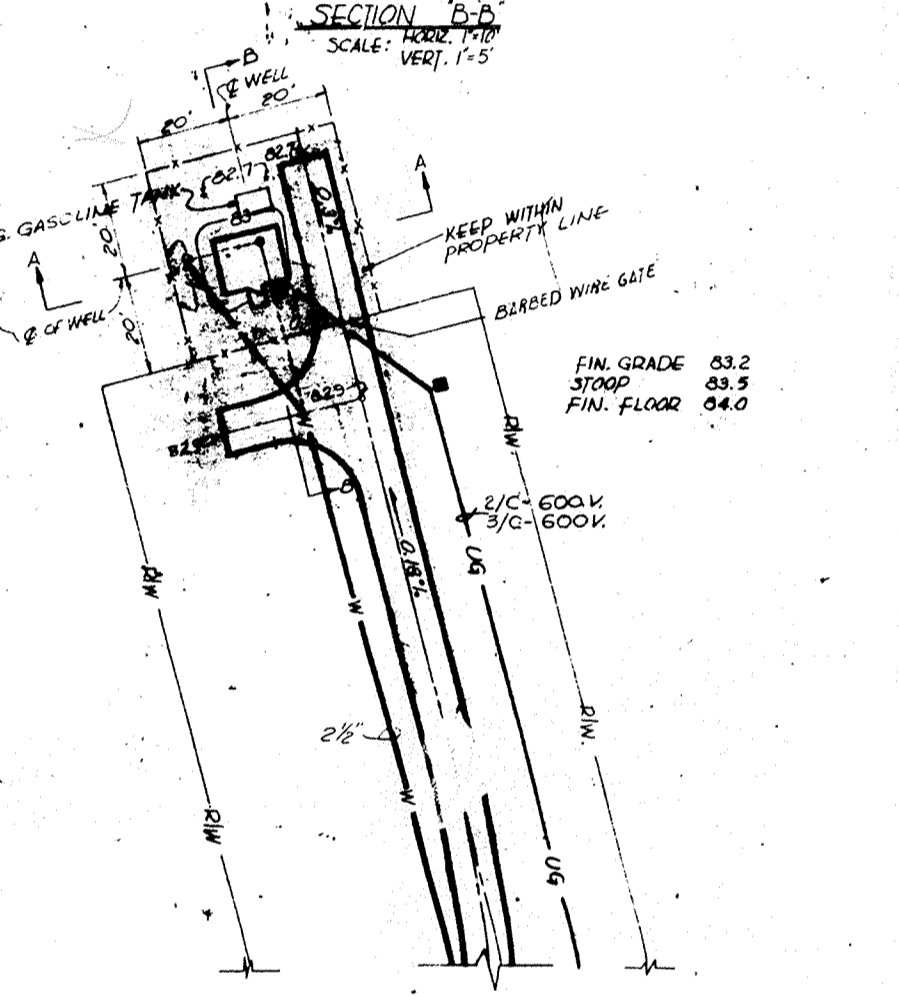
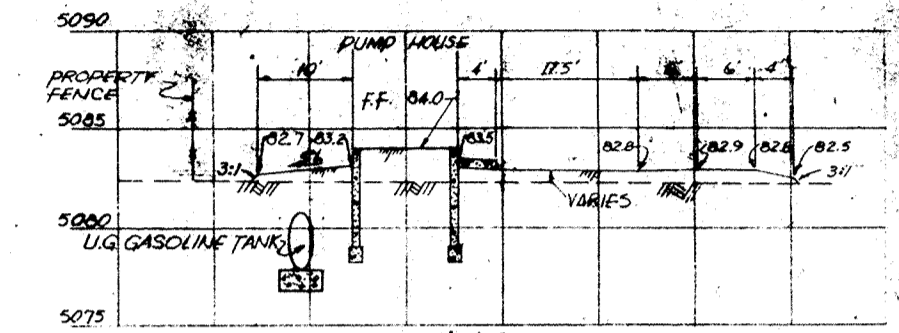
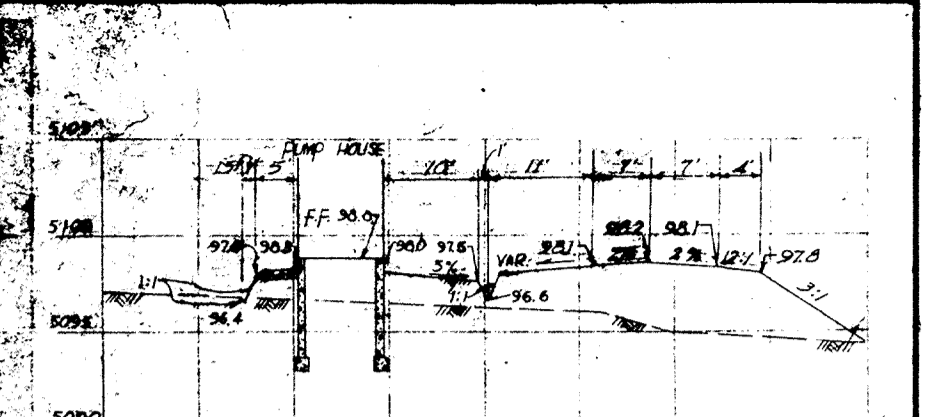
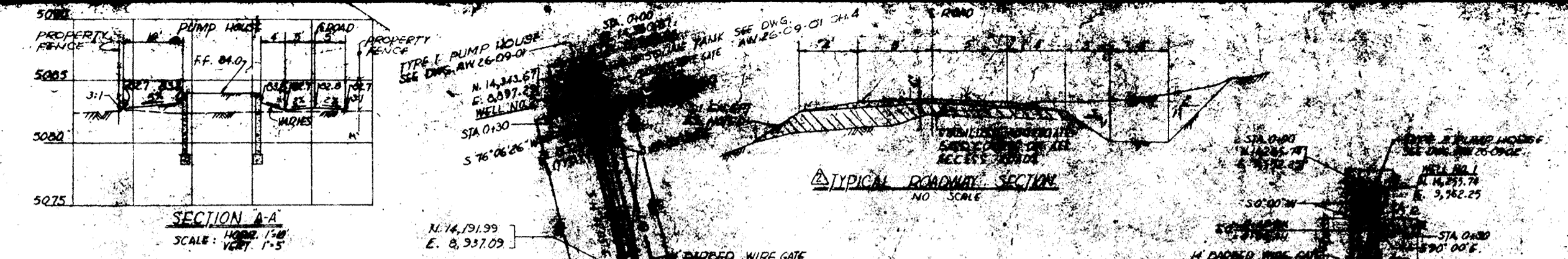
- 20550-11-6-16, PIPING PLAN OUTSIDE OF BUILDING
- 20550-33-2-01, SANITARY SEWER SYSTEM-DETAILS
- 20550-33-2-02, WASTE WATER DISPOSAL SYSTEMS-DETAILS
- 20553-33-2-01, SANITARY & WASTE WATER SYSTEMS-PROFILES
- 20553-01-2-02, SITE PLAN
- 20550-10-6-18, PLUMBING-SECTIONS & DETAILS-SHT. 1



REVISION	DATE	DESCRIPTION	BY	INITIALS
1	10/16/59	REVISED AS PER OPERATIONAL AS BUILT
2
3

Stearns-Roger		DEPARTMENT OF THE AIR FORCE	
ENGINEERS - CONTRACTORS		AIR FORCE BALLISTIC MISSILE DIVISION (ARDC)	
WS-107A-1 OPERATIONAL BASE			
FRANCIS E. WARREN AFB, WYOMING			
SITE 549-3			
SANITARY & WASTE WATER SYSTEMS			
PLAN			
DESIGNED BY: C.L. DECKER	DATE: 7/29/59	PROJECT NO: ENG 25-066-60-13	DATE: 30 JULY 59
CHECKED BY: H.H. PESCI	DATE: 8/25/59	AS NOTED	
DATE: 9/15/59	20553-33-2-01		

THIS PLAN ACCOMPANIES CONTRACT NO. DA-38-062-WB-594 MODIFICATION NO. 6



REVISIONS

NO.	DATE	DESCRIPTION	BY	APP'D.
1	NOV 58	NEW DWS. ADDED ADD. #1	J.T.B.	R.F.R.

DATE: 5 NOV 59

DESCRIPTION: WATER SUPPLY FACILITIES, SITE 549-3(EA)
LAYOUT PLAN & SITE GRADING

APPROVED: [Signature]
DATE: 5 NOV 59

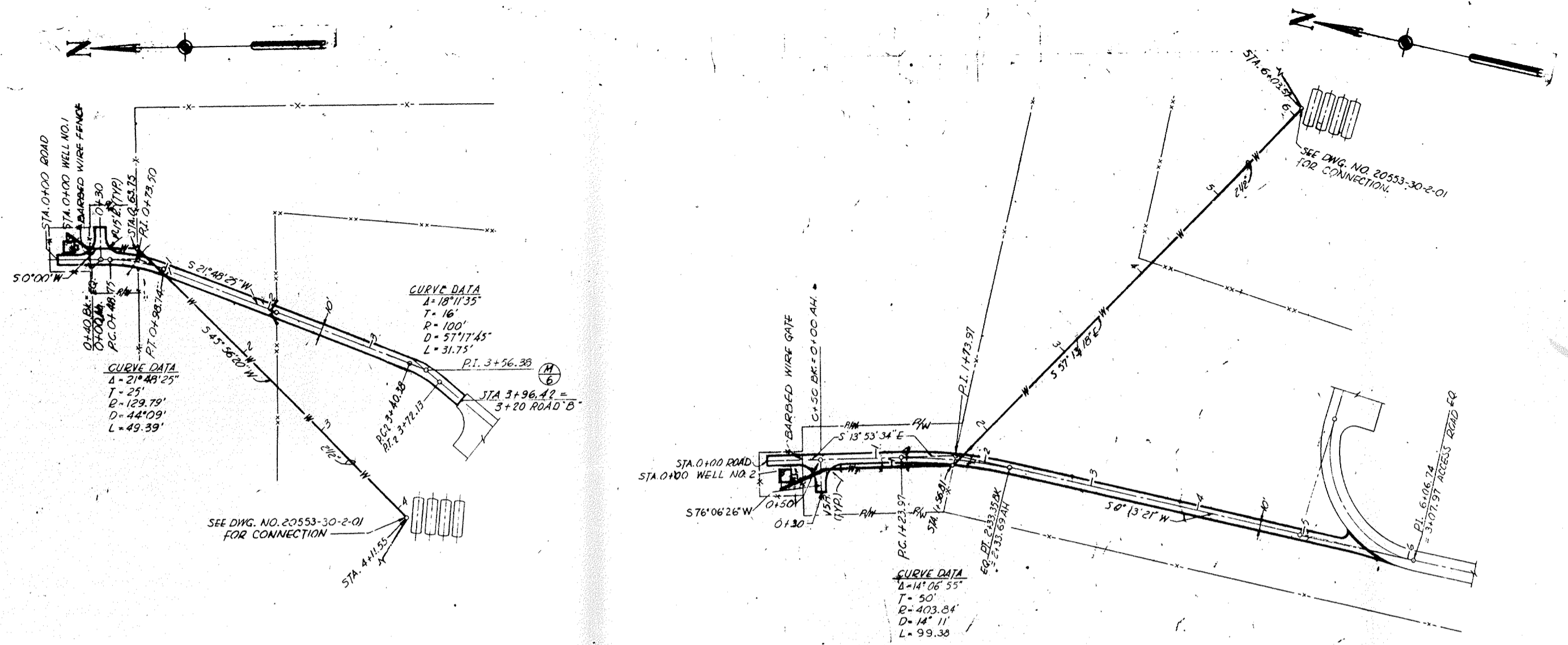
AW-16-15-03

THIS PLAN RECOMMENDS CONTRACT NO. DA-23-056 ENG 59-1
MODIFICATION NO. 2

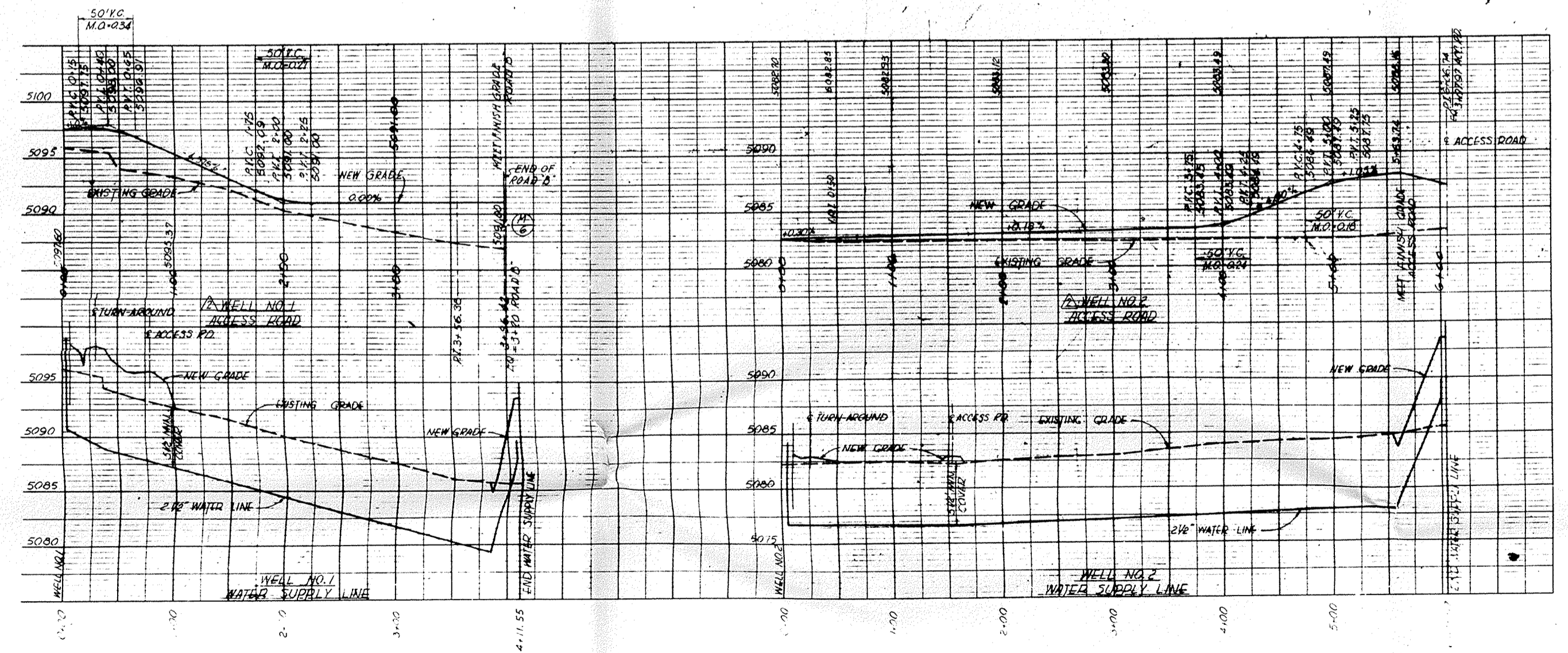
U.S. ARMY ENGINEER DISTRICT
OMAHA
CORPS OF ENGINEERS
OMAHA, NEBRASKA

F.E. WARREN A.F.B. CHEYENNE, WYOMING

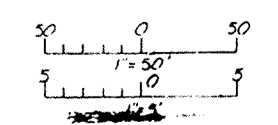
COL. C.E. DISTRICT ENGINEER



revised
respec'd



SCALE: HORIZ. 1"=50'
VERT. 1"=5'



AS-107A-1 OPERATIONAL BASE
COMPLEXES 549-1 THRU 549-9

REVISIONS	DATE	DESCRIPTION
NOV 59		NEW DWG. ADDED

DESIGNED BY: M.G.H.	F.E. WARREN A.F.B.
DRAWN BY: R.P.A.	CORPS OF ENGINEERS, U.S. ARMY
CHECKED BY: H.M.J.	OFFICE OF THE DISTRICT ENGINEER
APPROVED BY: [Signature]	CHEYENNE, WYOMING
WATER SUPPLY FACILITIES, SITE 549-3(EA)	
ROAD & WATER LINE	
PLANS & PROFILES	
AW-11-01-14	AW-11-01-14

THIS PLAN ACCOMPANIES CONTRACT NO. DA-23-006 976-534 MODIFICATION NO. 6