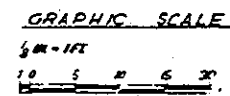


BUSING FUEL-LIQUID ARGON STORAGE TANK - SEE DETAILS DWG. 10-1-35

TANK SUPPORT FOR LOCATION & DETAIL SEE DWG. 10-1-35

CONC. DETAINING WALL & ENTRANCE TUNNEL RESTRICTION SEE DWG. 10-4-32

UTILITY TUNNEL RESTRICTIONS & DIMENSIONS & DETAILS, SEE DWG. 10-4-32



LEGEND

(A) OR (I) DENOTES COLUMN LINES

DOOR NUMBER - SEE DOOR SCHEDULE
HARDWARE SET

SECTION LETTER OR DETAIL NUMBER
DRAWING ON WHICH SECTION OR DETAIL APPEARS

ROOM FINISH NUMBER - SEE ROOM FINISH & PAINTING SCHEDULE

DENOTES REINFORCED CONCRETE

3/4" STEEL STUDS @ 16" O.C. & METAL LATH & PLASTER

CONC. CONCRETE

DET. DETAIL

D.W.D. DRINKING WATER DISPENSER

DWG. DRAWING

EQ. EQUIPMENT

FIN. PL. FINISH FLOOR

F.D. FLOOD DRAIN

(G.P.E.) GOVERNMENT FURNISHED EQUIPMENT

CHGR. BATTERY CHARGER

JCT. JUNCTION

EMMCC ERECTION MECHANISM MOTOR CONTROL CENTER

MACH. MACHINERY

ELECT. ELECTRICAL

(N.C.) NOT IN CONTRACT

OPENING

ROOM

R.M. ROOM

SECT. SECTION

STRUCT. STRUCTURAL

VAC. VACUUM

D.C. POWER SUPPLY - D.C.

W.P. WORK POINT

B.M. BENCH MARK

M.H. MANHOLE

C.K.P. CHECKERED PLATE

M.E.C. MECHANICAL

DISTRIB. DISTRIBUTION

TRANSF. TRANSFORMER

CONT. CONTINUATION

LTC. LIGHTING

H.P.U. HYDRAULIC PUMP-BOILER

H.P.U. HYDRAULIC POWER UNIT

H.P.U. HYDRAULIC POWER UNIT

M.C. MOTOR CONTROL CENTER

M.C. MOTOR CONTROL CENTER (400VA)

N.C.U. NITROGEN CONTROL UNIT

N.C.P. NITROGEN CONTROL PANEL

P.C.U. PRESSURIZATION CONTROL UNIT

O. OXYGEN

R.P. ROCKET PROPELLANT FUEL

L.O. LIQUID OXYGEN

T.O.P. TOP OF

(C.M.E.) CONTRACTOR HOODING TO EQUIPMENT FURNISHED AND INSTALLED BY OTHER

NOTE: 1. LSB BUILDING ORIENTATION, LOCATION, FINISH GRADE & FINISHED FLOOR ELEVATIONS SEE CIVIL DWGS.

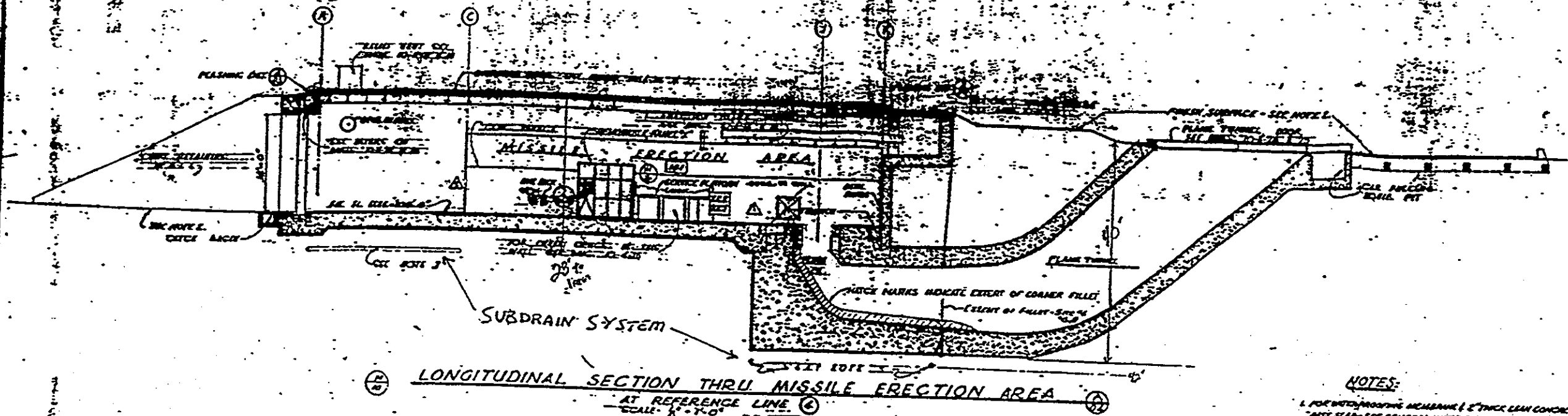
NO.	REVISION	DATE	DESCRIPTION
1	AS-BUILT	10-1-35	ISSUED FOR CONSTRUCTION
2	REVISED	10-1-35	REVISED IN ACCORDANCE WITH ADD. NO. 1
3	REVISED	10-1-35	REVISED IN ACCORDANCE WITH ADD. NO. 2

Stearns-Roger
DEPARTMENT OF THE AIR FORCE
AIR FORCE BELLINGHAME SYSTEM (AFC-3)

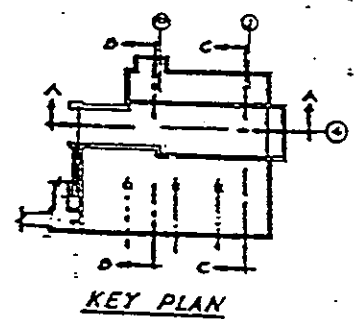
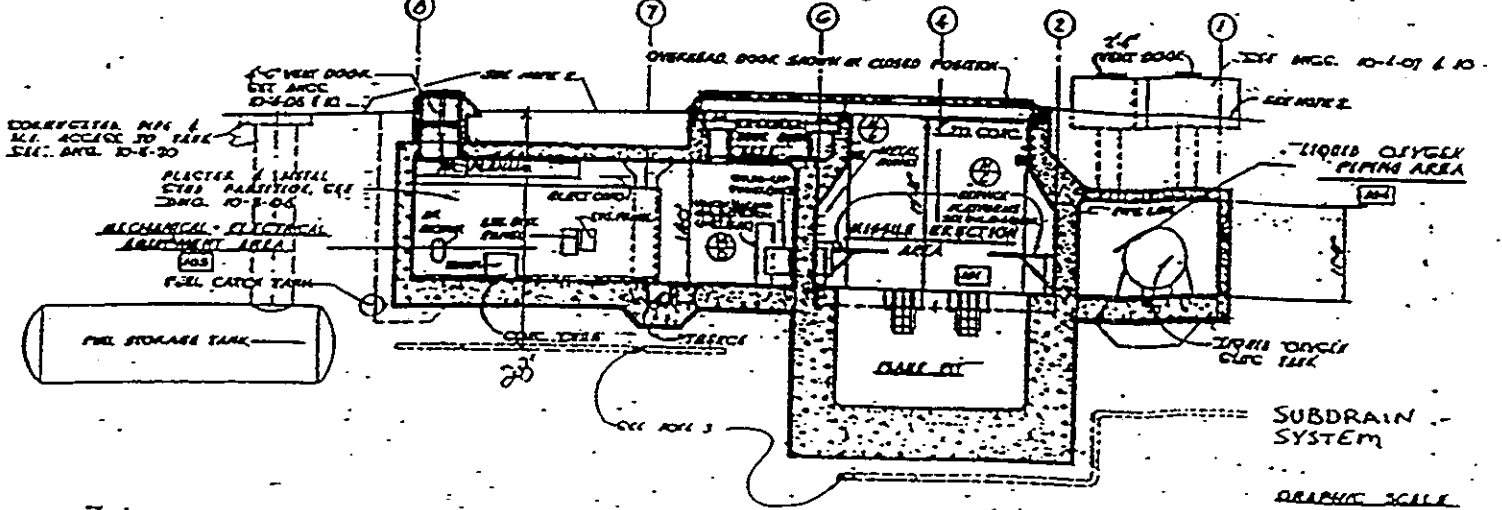
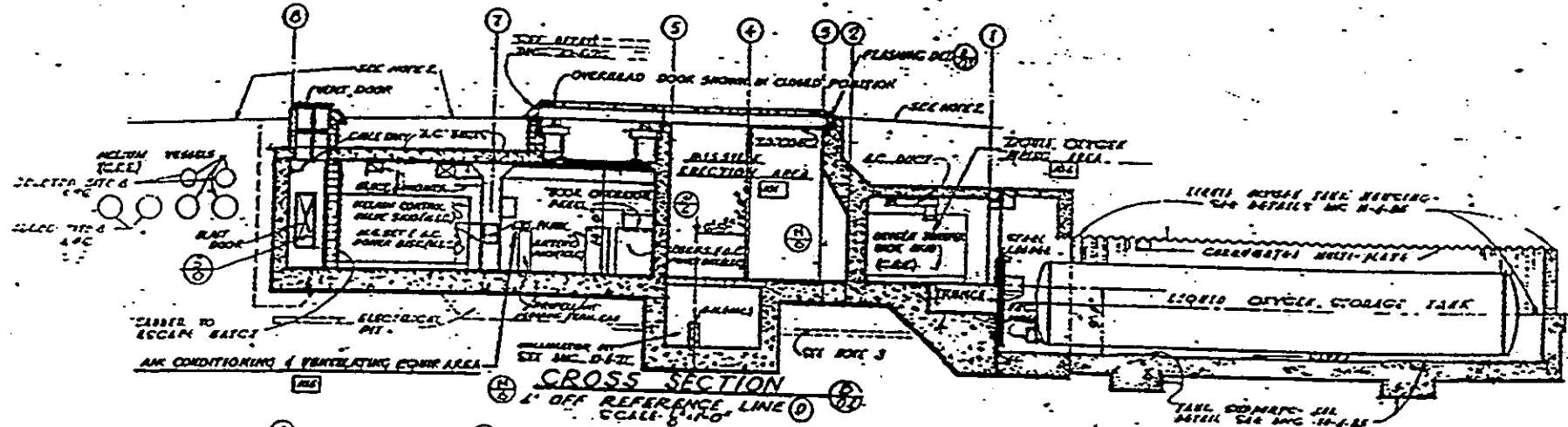
WS-107A-1 OPERATIONAL BASE
FRANCIS E. WENGER A.F.B., WYOMING
ALL SITES 549
LAUNCH & SERVICE BLDG.
GEN'L. ARRG'T. PLAN - FLR. MTD. EQUIP.

DATE: 10-1-35
SCALE: AS SHOWN

20550-10-3-01



- NOTES:**
- 1. FOR WATERPROOFING MEMBRANE, 1/2" THICK LEAD CONCRETE BASE SLAB - SEE GENERAL NOTES ON DWG. 10-7-01
 - 2. MISSILE SERVICE - FOR EXTENT OF EXCAVATION, BACKFILL, FINISH & PAINT, SEE CIVIL DWGS.
 - 3. FOR 'CIVIL-DRAWING', SEE CIVIL DRAWINGS



NO.	REVISION TO DRAWING AS BUILT CONDITION	DATE
1-10	Revised Figure P-11	12-7-77
1-11	Revised Gas Detachment Unit	12-7-77
1-12	Added Service Platform to Section	12-7-77
1-13	Revised in accordance with L-10-10-77	12-7-77
1-14	Revised in accordance with L-10-10-77	12-7-77

CROSS-SECTION LAUNCH AND SERVICE BLD. FLAME PIT (note subdrain system)